




# RASHID YACHTS & MARINA

*Dubai's Premier Waterfront  
Living Experience*

EMAAR

The background of the slide is a dark blue-grey color with a film strip motif. A horizontal band of lighter blue-grey is in the center, where the text is located. Above and below this band are rows of white, rounded rectangular shapes representing film sprocket holes.

# 2022: Dubai's Turn To Claim The Riviera Lifestyle And Reign As A World-class Yachting Destination



# Rashid Yachts & Marina

Rashid Yachts & Marina is the new global destination for discerning yacht owners to experience Dubai's vibrant scene in an elegant environment where beauty and luxury converge.

Designed to embody the ultimate modern waterfront lifestyle, it combines luxury residences and a full-service marina with an appealing mix of restaurants and shops, creating a unique definition of living at sea.



Generous  
Promenades



World-Class  
Superyacht Marina



Signature  
Hotels



QE2 Hotel





# Perfectly Connected

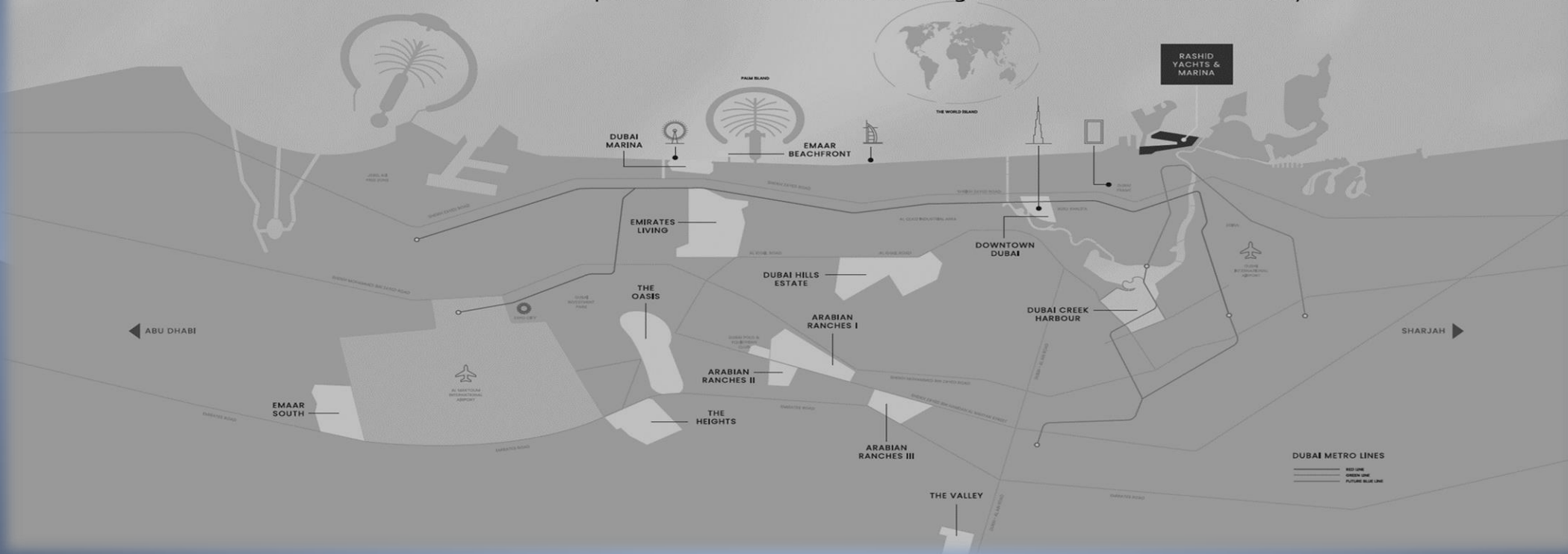
22 Mins to  
Downtown Dubai

20 Mins to  
Dubai Int'l Airport

22 Mins to  
Al Sabkha Gold Souq

32 Mins to  
Dubai Marina

A rare freehold opportunity near bustling trading hubs like Gold Souk, Deira & Bur Dubai.  
A perfect choice for families seeking the ultimate waterfront lifestyle."





## THRIVING MARINA







BUSTLING PROMENADE



## OPULENT LIFESTYLE



From a vision ignited in 2022 to a reality achieved today, we proudly celebrate the successful completion of all launches in RYM Masterplan Phase 1!!!



An architectural rendering of a modern waterfront development. On the left, a tall, multi-story building with a mix of white and brown facades and numerous balconies stands prominently. In front of it is a smaller, more horizontal building with a glass-fronted ground floor. The foreground features a wide, paved promenade with palm trees, people walking, and a red convertible car. To the right, a marina with several yachts is visible. The sky is clear and blue.

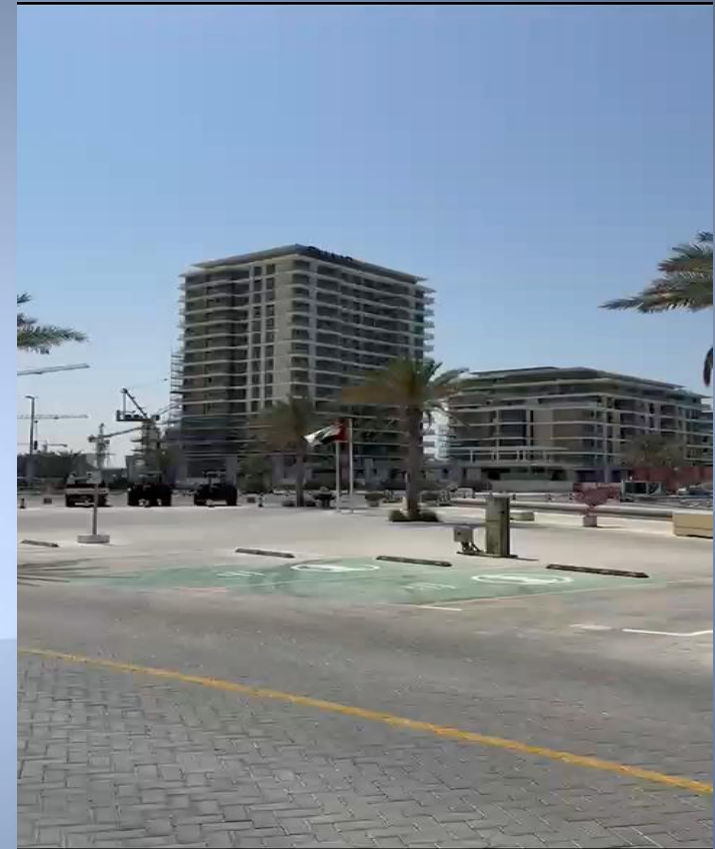
# RASHID YACHTS & MARINA

SEAGATE

EMAAR

SEAGATE  
BCC – Feb 2025







Now Steering  
Towards New Horizons

SOLD OUT

EMAAR



Inspired by the world's best,  
Dubai crafts its own iconic  
waterfront destination—where  
leisure, dining, retail, and  
culture unite!!!

Sydney Harbour



Darling Harbour



Downtown Dubai



Southbank Centre



Aker Brygge



Nyhavn



Härfenscity





Launching...

Rashid Yachts & Marina –Phase 2



# RYM Phase 2 – A Grand Canvas In The Making

- GFA ~ 717,646 Sqm
- Res Units ~5,525
- 3 Hotels ~ 400 Keys
- 1 School
- 1 Nursery
- Healthcare Facilities
- Ample Parks & Recreational Areas

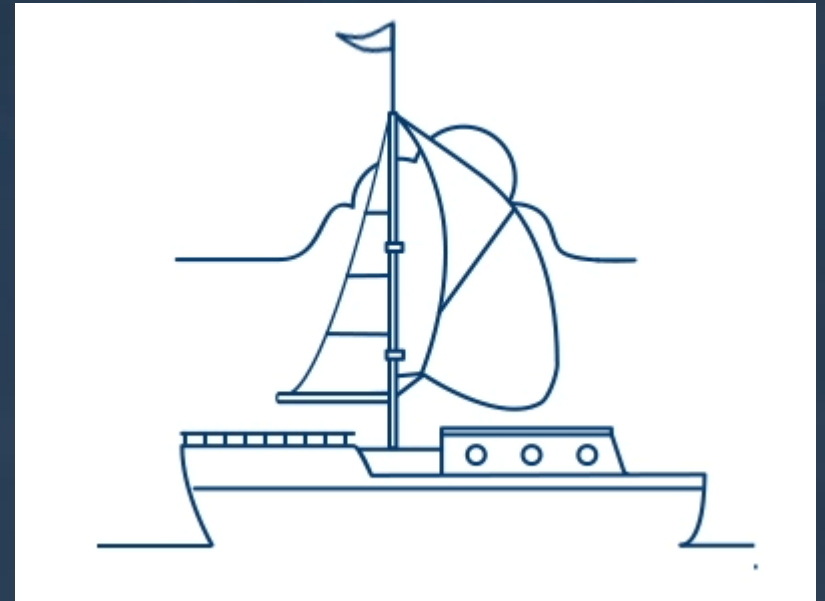


0m 250 500m

(For Indicative Representation  
Only...Subject to Change)



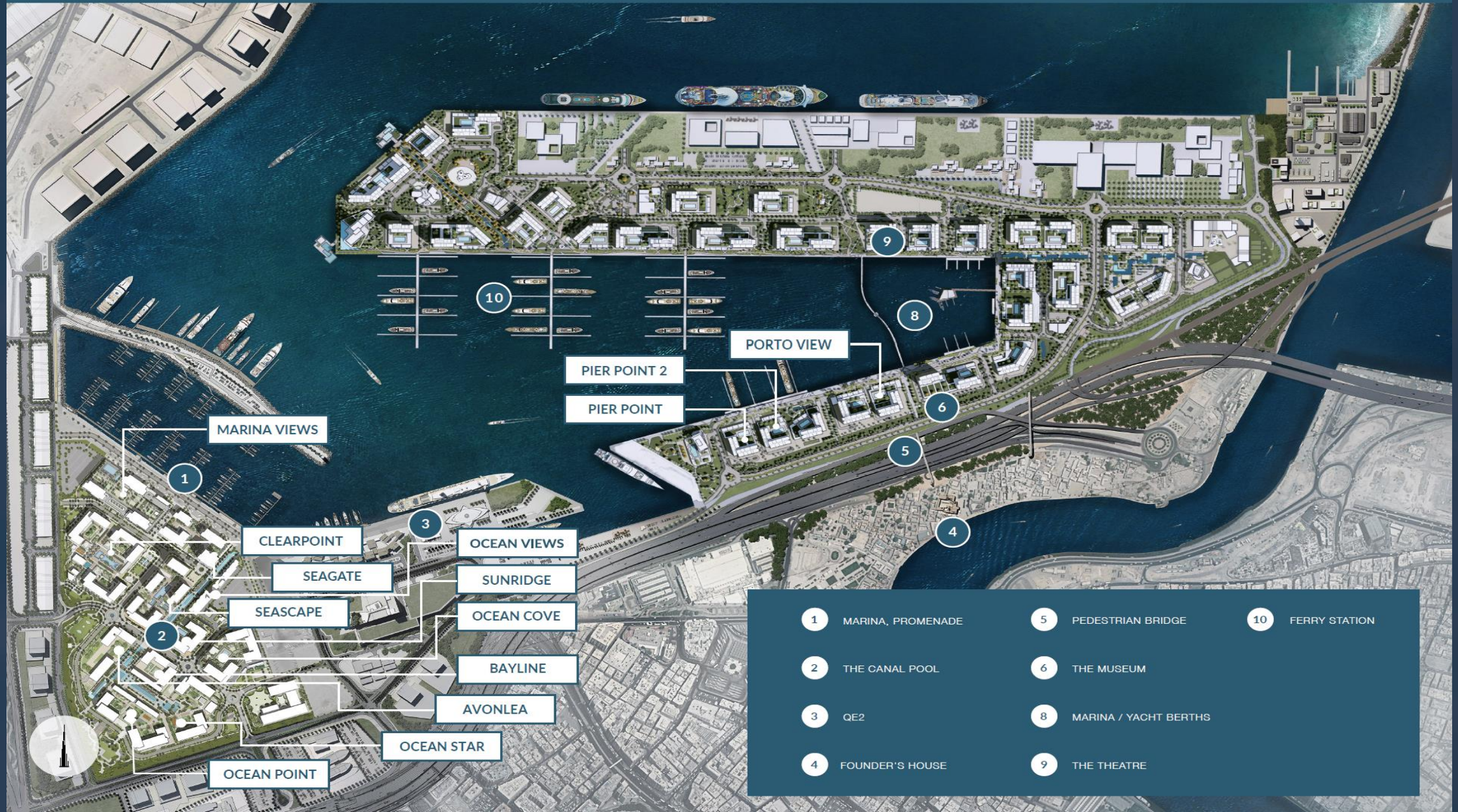
Rashid Yachts and Marina Phase 2  
New Landmarks Beckon!!!





# RASHID YACHTS & MARINA

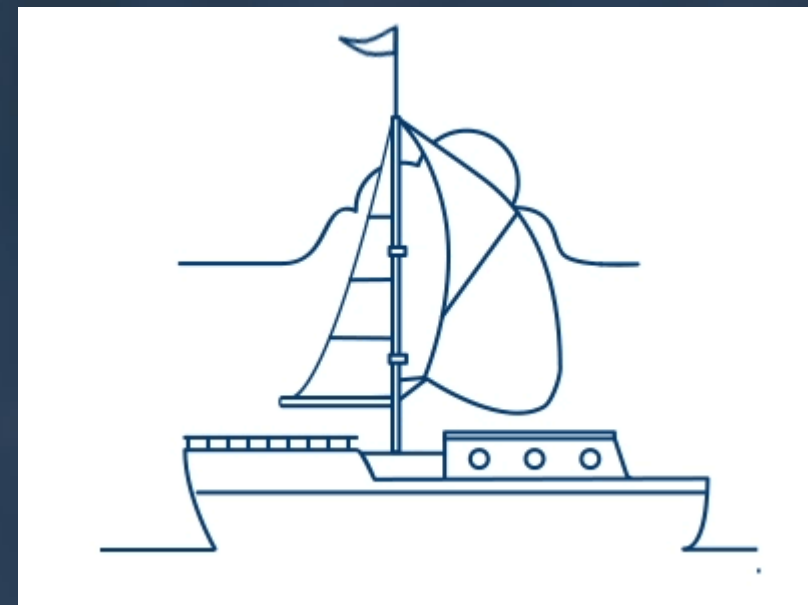
EMAAR



- |   |                   |   |                       |    |               |
|---|-------------------|---|-----------------------|----|---------------|
| 1 | MARINA, PROMENADE | 5 | PEDESTRIAN BRIDGE     | 10 | FERRY STATION |
| 2 | THE CANAL POOL    | 6 | THE MUSEUM            |    |               |
| 3 | QE2               | 8 | MARINA / YACHT BERTHS |    |               |
| 4 | FOUNDER'S HOUSE   | 9 | THE THEATRE           |    |               |



# Rashid Yachts and Marina Phase 2 Dubai's New Chapter Of Waterfront Paradise Unveiled!!!





# Pier Point

RASHID YACHTS & MARINA

EMAAR



# PORTO VIEW

RASHID YACHTS & MARINA

EMAAR





# PORTO VIEW

RASHID YACHTS & MARINA



EMAAR



# PORTO VIEW

RASHID YACHTS & MARINA

EMAAR



# PORTO VIEW

RASHID YACHTS & MARINA

EMAAR





# PORTO VIEW

RASHID YACHTS & MARINA

EMAAR





# Pier Point

STUNNING VIEWS

RASHID YACHTS & MARINA

EMAAR

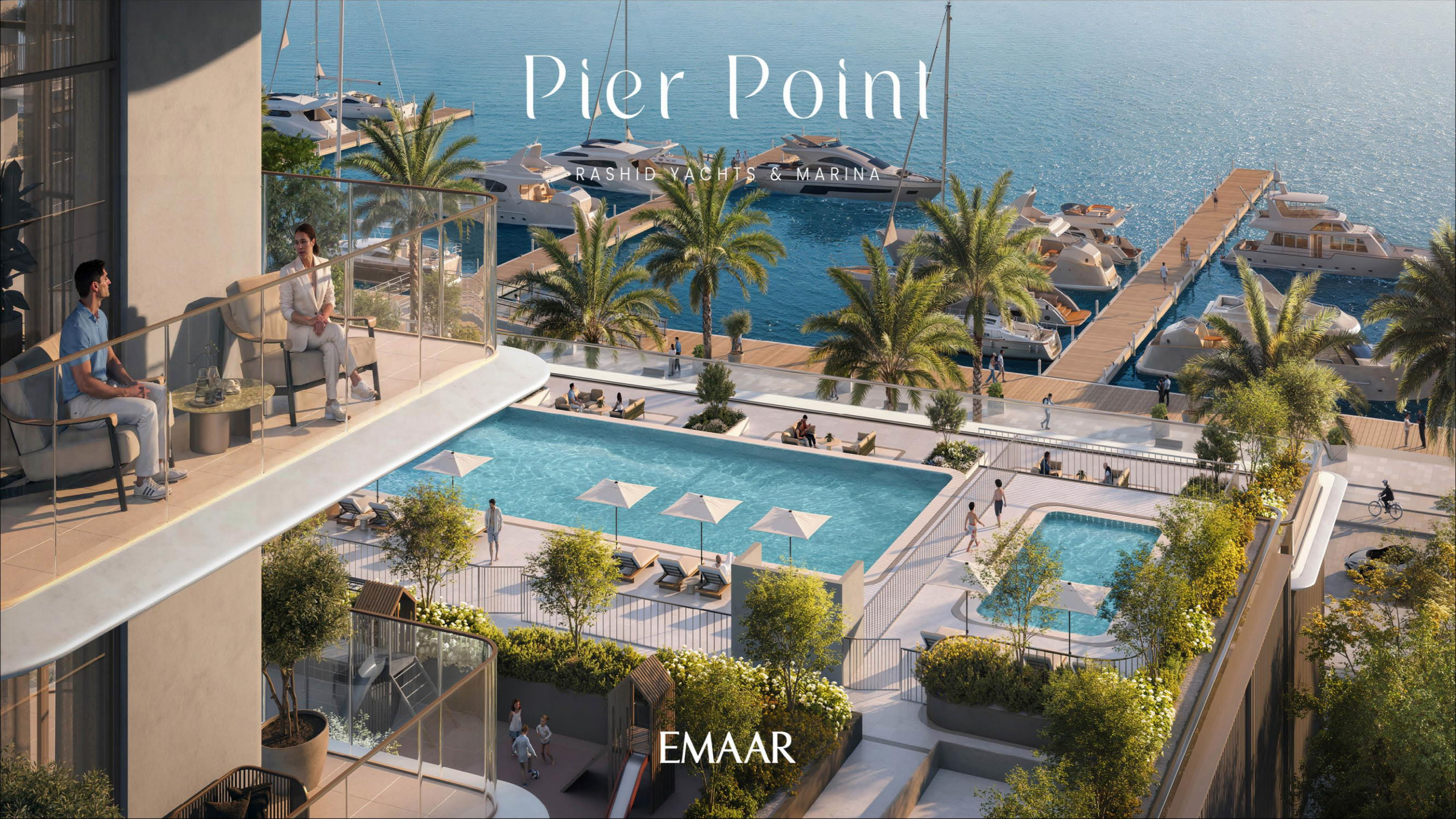




# Pier Point

RASHID YACHTS & MARINA

EMAAR

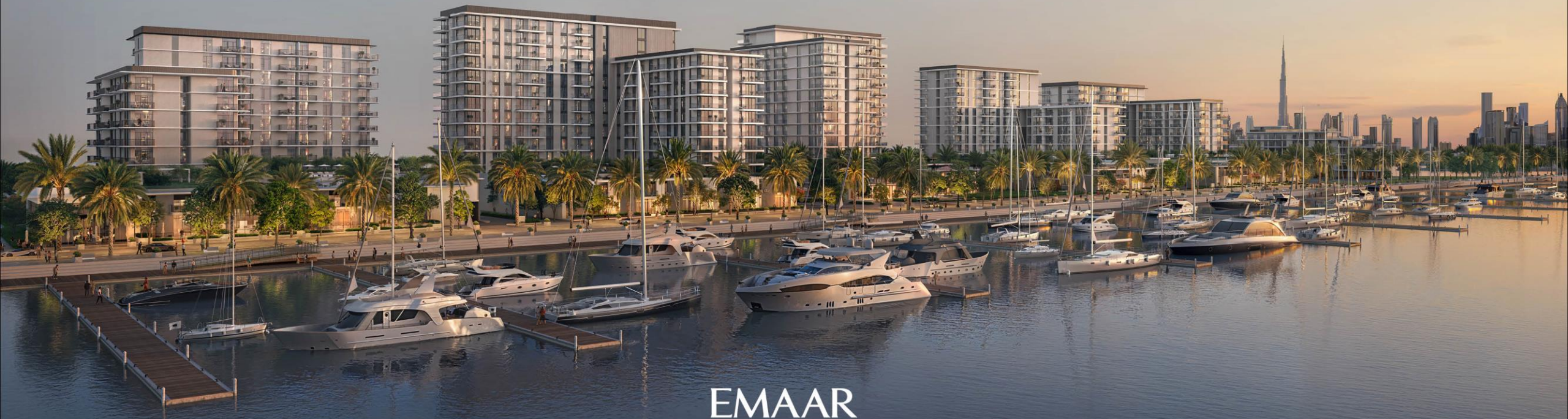




# Pier Point

RASHID YACHTS & MARINA

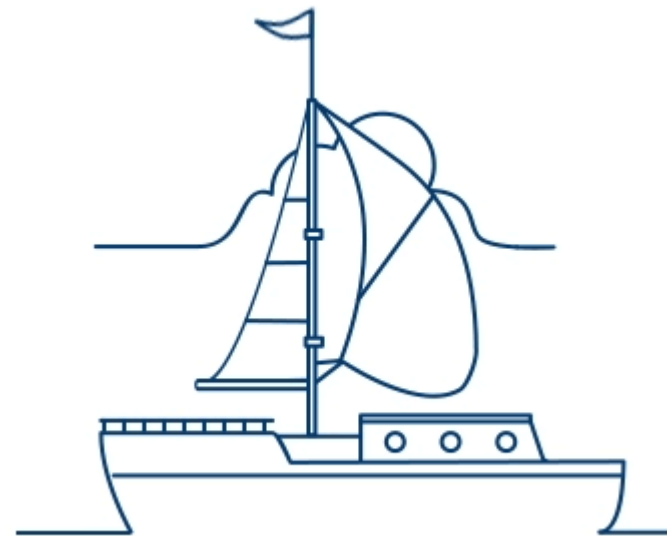
RIVIERA LIFESTYLE AT IT'S BEST



EMAAR



## PREMIUM LIFESTYLE AMENITIES







## A Lifestyle of *Unmatched Convenience*

Pier Point offers a range of amenities designed to elevate your lifestyle. From the exclusive infinity pool with marina views to the state-of-the-art gym and dedicated kids' play areas, everything you need is right at your doorstep.



Infinity Pool with  
Marina Views



Expansive Landscaped  
Gardens



Exclusive Gym  
Facilities



Versatile Multipurpose  
Rooms



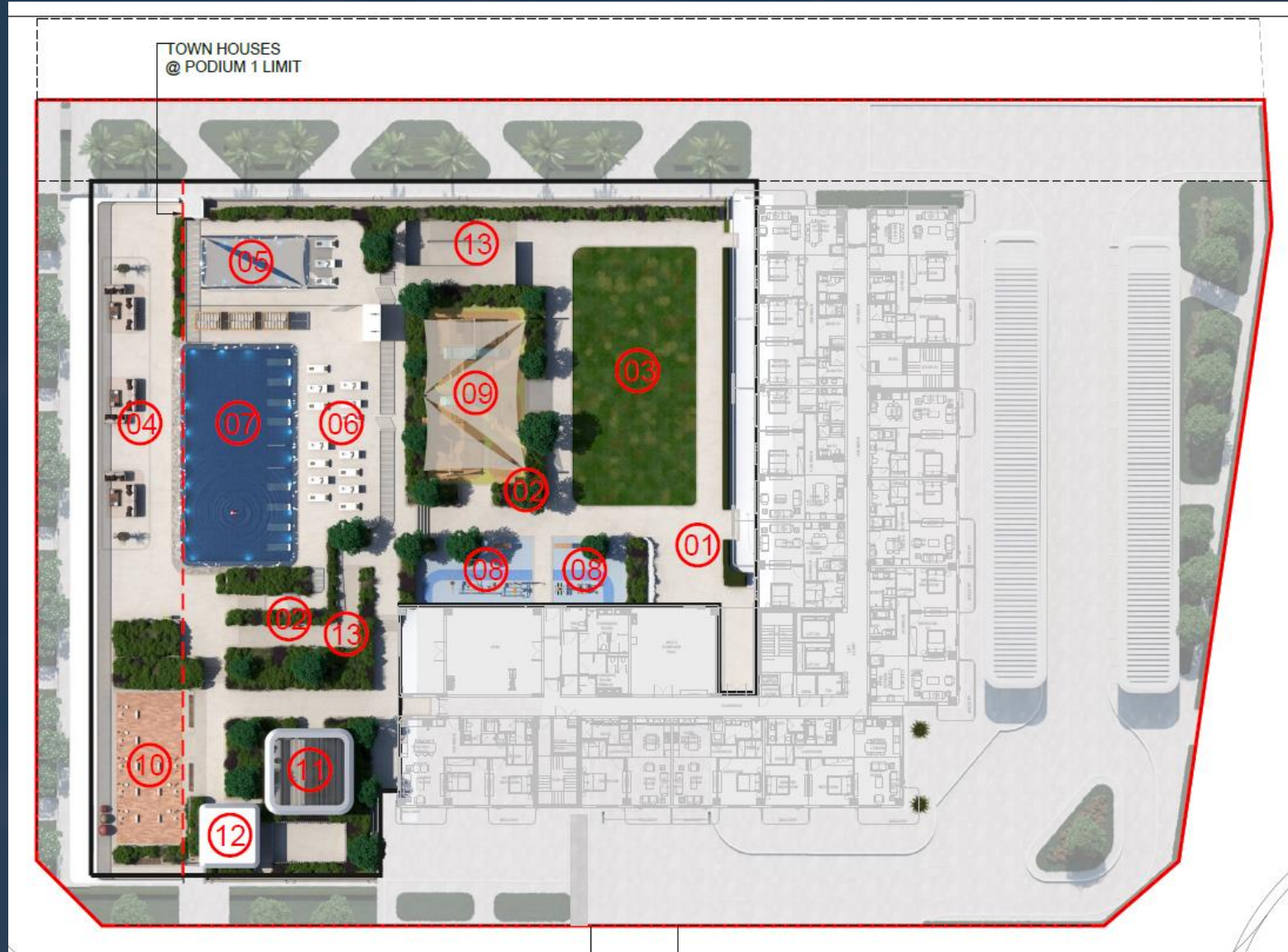
Vibrant Kids' Play  
Areas



Elegant Retail Outlets



# Spacious Amenities Decks from 3000 to 3600 Sqm



1. Plaza Area
2. Tree Avenue
3. Lawn
4. Viewing & Seating Area
5. Kids Pool
6. Poll Complex
7. Adult Pool
8. Outdoor Gym
9. Kids Play Area
10. Yoga Platform
11. BBQ Area



# Pier Point

RASHID YACHTS & MARINA

EMAAR



# PORTO VIEW

RASHID YACHTS & MARINA

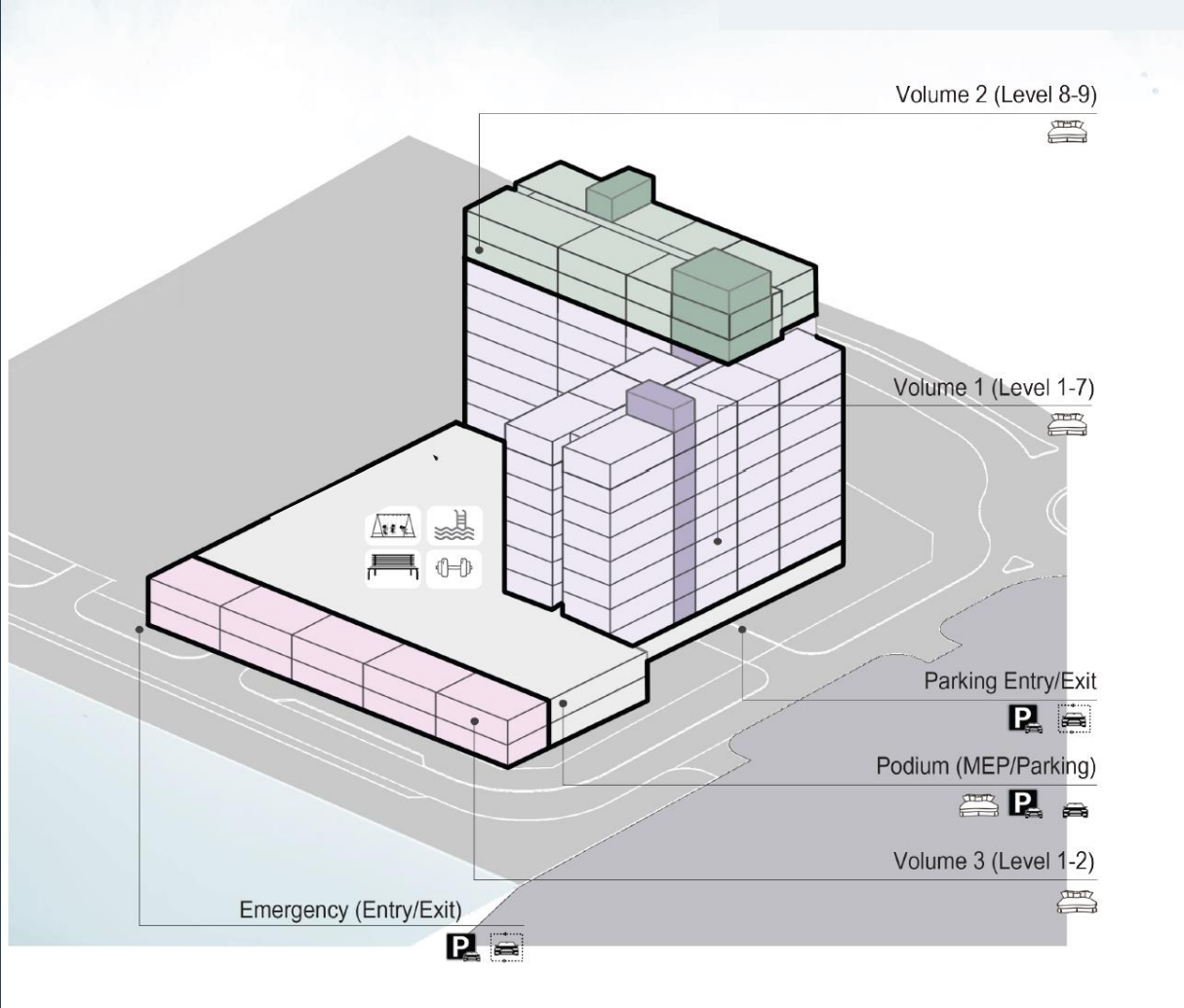


EMAAR

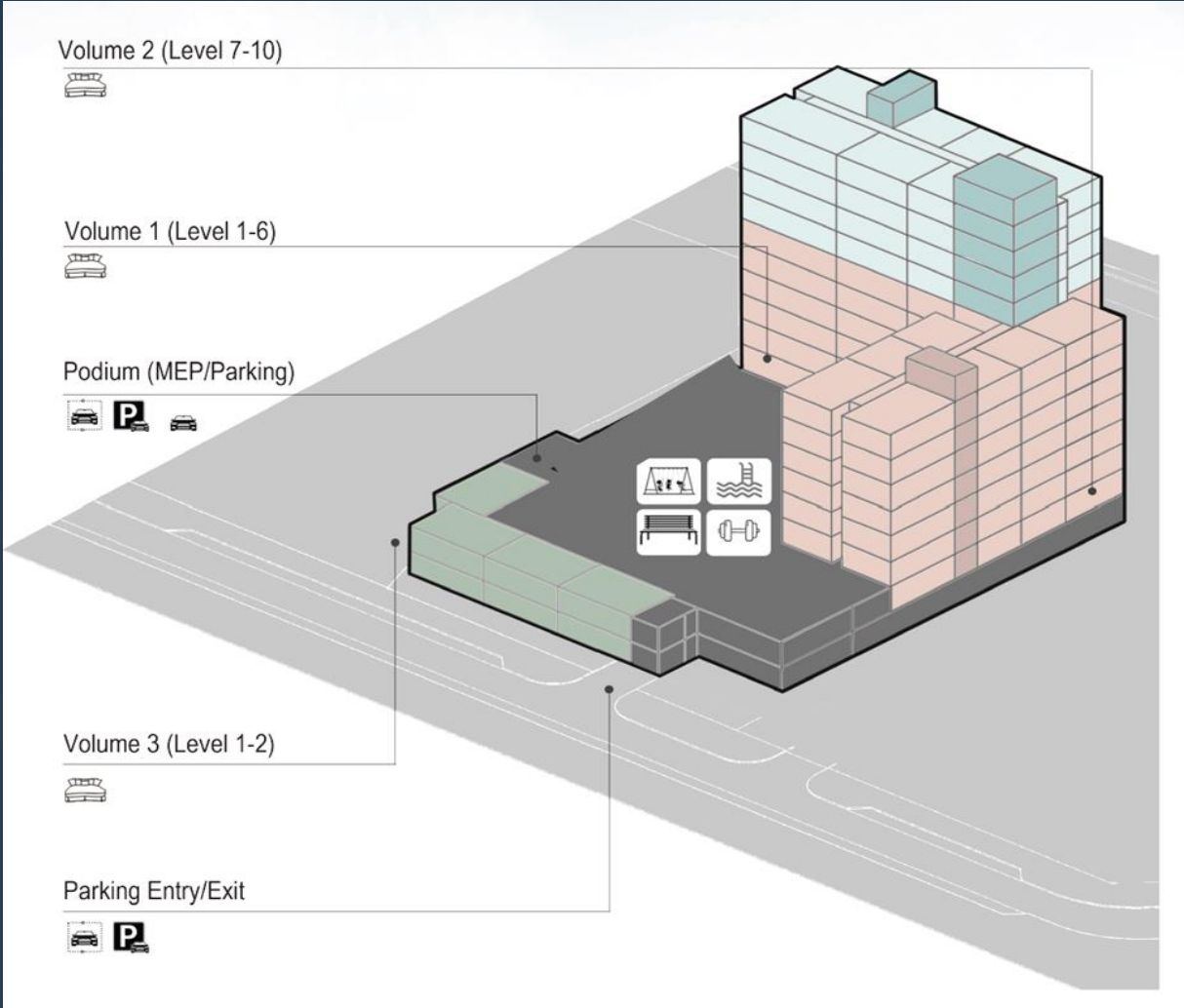


# Pier Pont 1& 2 - A Waterfront Paradise Project Configuration

## PIER POINT -1



## PIER POINT -2

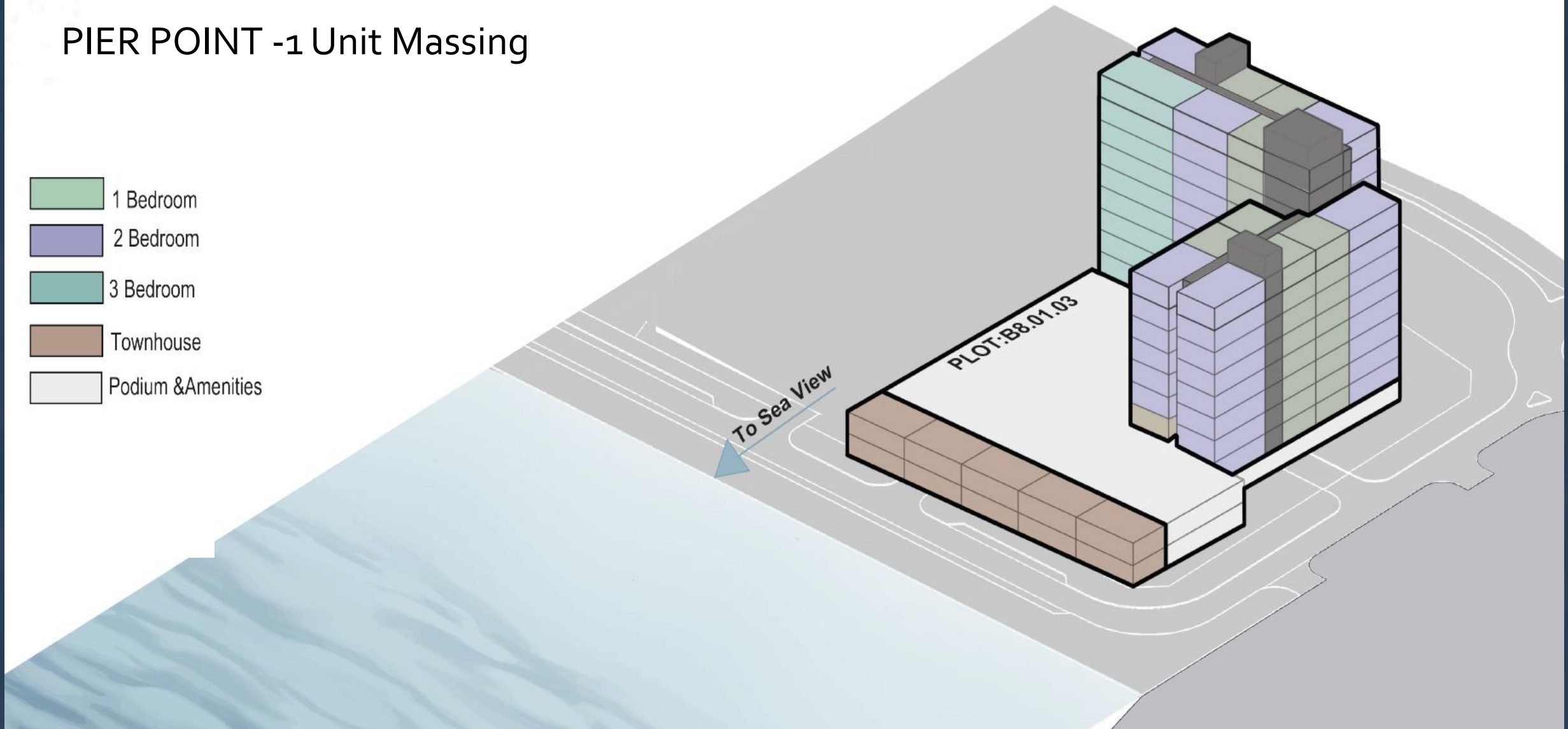




# Pier Pont 1& 2 - A Waterfront Paradise

## PIER POINT -1 Unit Massing

- 1 Bedroom
- 2 Bedroom
- 3 Bedroom
- Townhouse
- Podium & Amenities





# Pier Pont 1& 2 - A Waterfront Paradise

## Typical Floor Plate

WATER  
←

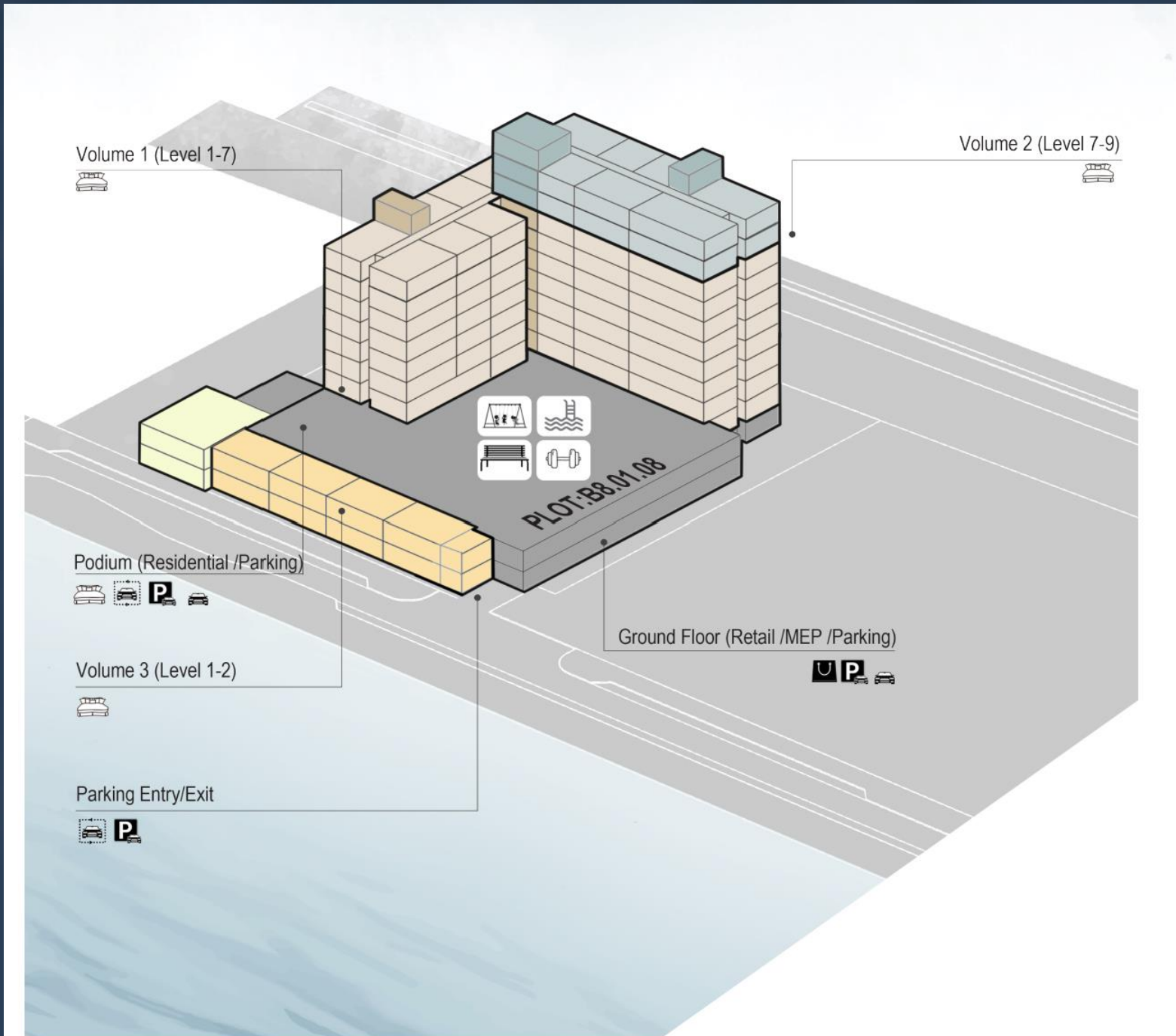
Total Units 14

- 1BR- 7
- 2BR-6
- 3BR- 1



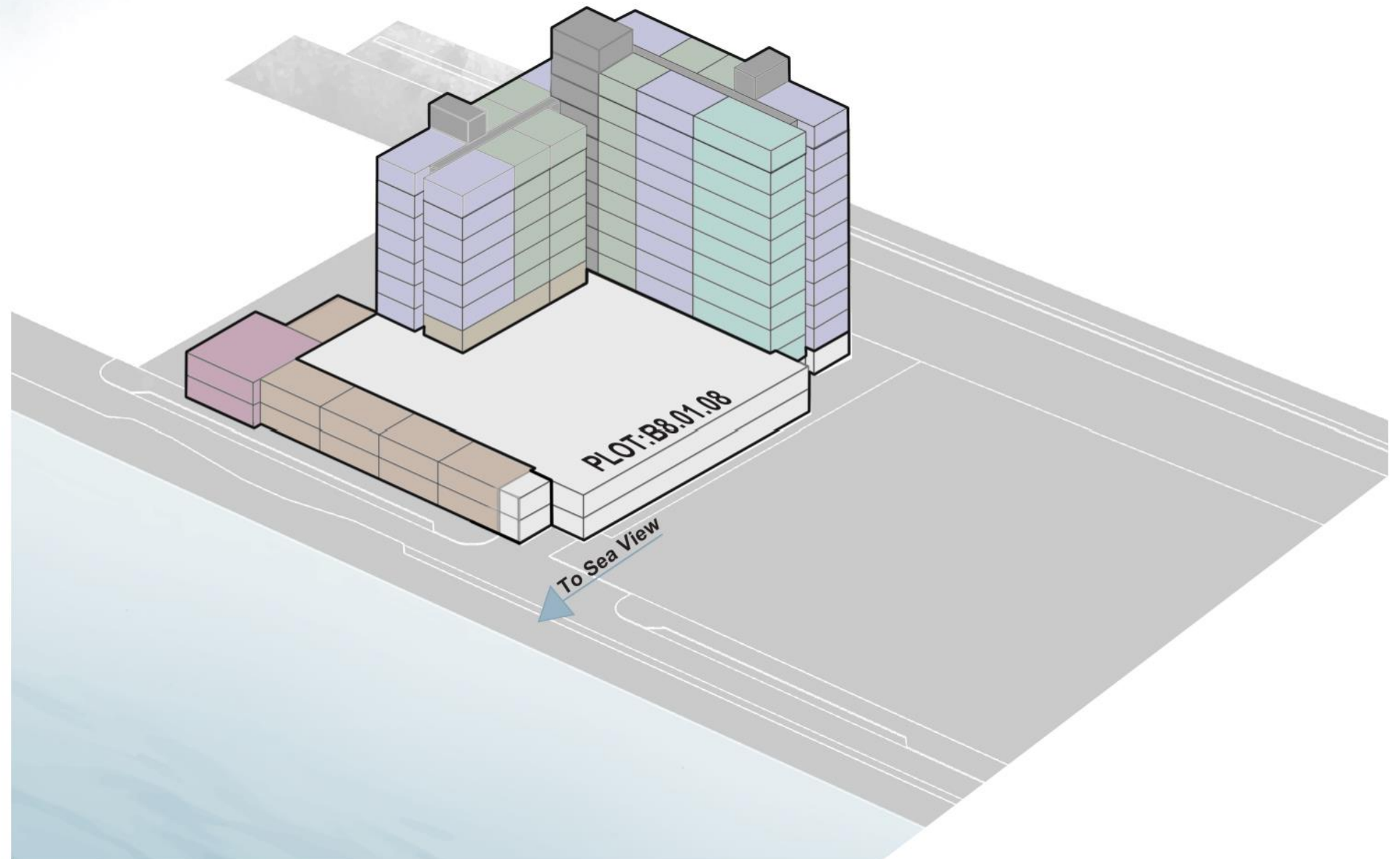


# Porto Views Project Configuration





# Porto Views –Unit Massing



- 1 Bedroom
- 2 Bedroom
- 3 Bedroom
- Townhouse
- Podium & Amenities
- Retail
- GYM
- Circulation



# Porto Views –Typical Floor Plate

Total No Of Units – 14

1 BR Units – 7

2 BR Units – 6

3 BR Units - 1



TYPICAL FLOOR

LEGEND	
	1 BEDROOM
	2 BEDROOM
	3 BEDROOM

WATER





BESPOKE INTERIORS FOR AN ENRICHED  
LIFESTYLE





# PORTO VIEW

RASHID YACHTS & MARINA



EMAAR



# PORTO VIEW

RASHID YACHTS & MARINA

EMAAR





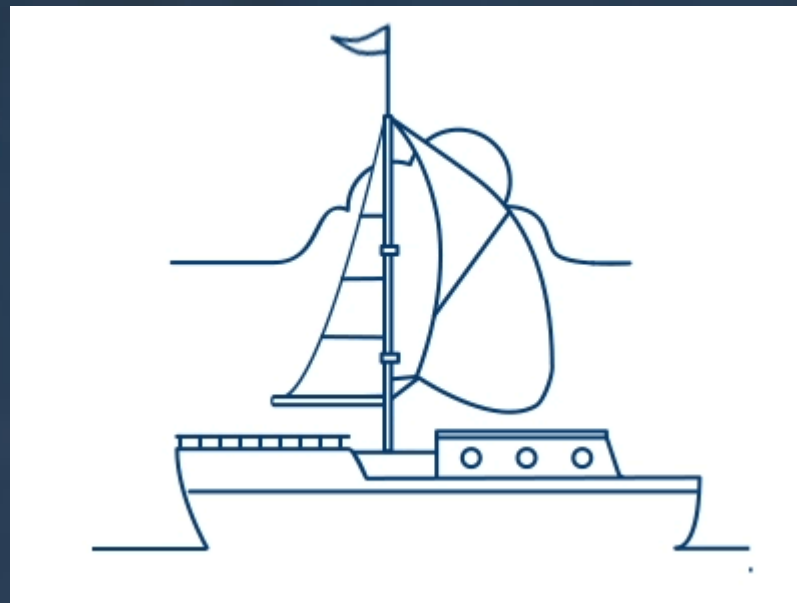
# PORTO VIEW

RASHID YACHTS & MARINA

EMAAR



## FLOOR PLANS





One Bedroom Units  
Fully Fitted Kitchens  
Average Area – 790 Sqft





Two Bedroom Units  
Fully Fitted Kitchens  
Average Area – 1,275 Sqft





Three Bedroom Units  
Fully Fitted Kitchens  
Average Area – 1,695 Sqft





# Pier Point & Porto Views – Truly Owners Pride!!!

## Iconic Location

- Heart of Mina Rashid, bridging old Dubai's rich traditions with new opportunities.
- Easy access to historical landmarks and modern amenities.

## Exclusive Access & Stunning Views

- Direct access to a lavish community pool and beautifully landscaped surroundings.
- Stunning Views Of the Marina

## Exceptional Design

- Meticulously designed apartments that blend functionality with style.
- Thoughtfully curated layouts maximizing space, natural light, and comfort.

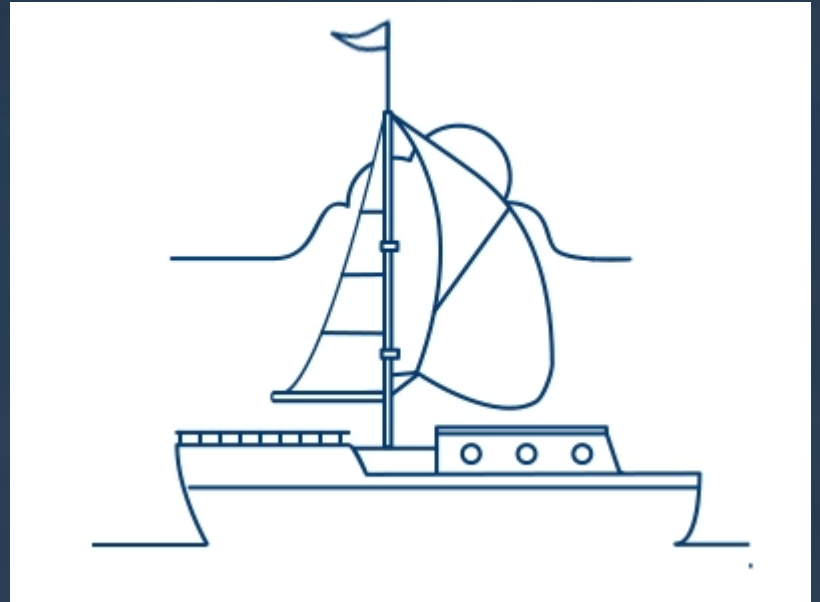
## Premium Landscaped Area

- Extensive podium-level greenery providing a sanctuary for relaxation and recreation.
- Features include yoga platforms, BBQ areas, outdoor gyms, and dedicated kids' play zones, promoting holistic living and community engagement.



# Rashid Yachts and Marina Phase 2

## # Opportunity





# An Iconic Waterfront Gem Delivering Stunning Beauty, ROI & Exceptional Appreciation





# Rashid Yachts & Marina – An Astounding Growth Trajectory

Stunning PSF Surge of 50%+ in last 3 Years



# Invest Smart!!!

Rashid Yachts &  
Marina  
#Opportunity



Entry into a waterfront  
Development at  
inception stage



Integrated Premium Lifestyle  
Community close to an International  
Cruise Terminal , Buzzing Marina,  
Dubai's only Floating Hotel & Vibrant  
Promenade

Extremely Attractive PSF  
with potential to reach AED  
4000-5000 PSF by  
handover

Home to vast amenities including  
largest canal pool, high end retail,  
numerous F&B options

Masterplan gives a  
fresh outlook to a  
largely unorganized  
surroundings

One of the last  
seafront masterplans  
in Dubai



# COMMERCIALS

One  
Bedroom

Two  
Bedroom

Three  
Bedroom

Min Price  
AED 1.93 Mn

Min Price  
AED 2.86 Mn

Min Price  
AED 4.06 Mn

Max Price  
AED 2.79 Mn

Max Price  
AED 4.55 Mn

Max Price  
AED 5.52 Mn



# PAYMENT PLAN

## Unique 20% Plan

- 2024 -20%
- 2025 -20%
- 2026 - 20%
- 2027 - 20%
- ACD Oct 2028 - 20%

10% DOWN PAYMENT On Booking	10% 1st Instalment Nov 2024	10% 2nd Instalment Apr 2025
10% 3rd Instalment Sep 2025	10% 4th Instalment Jun 2026 Upon 10% Construction Completion*	10% 5th Instalment Nov 2026 Upon 20% Construction Completion*
10% 6th Instalment May 2027 Upon 40% Construction Completion*	10% 7th Instalment Sep 2027 Upon 60% Construction Completion*	20% 8th Instalment Oct 2028 Upon 100% Construction Completion*

\*Estimated Construction Completion Date



## AGENTS PACK LINK

PIER  
POINT



PORTO  
VIEW

